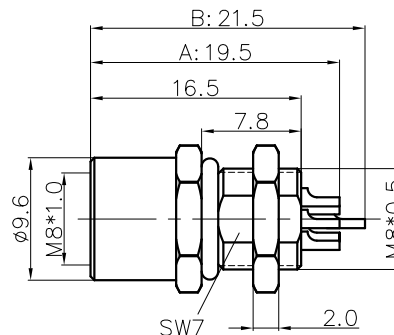
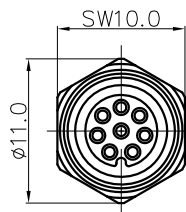


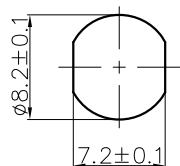
REVISION RECORD

| REV | ECN | DESCRIPTION | DRFT | DATE |
|-----|-----|-------------|------|------|
|-----|-----|-------------|------|------|



NOTES:

- Rated voltage/current : 3pin: 60V / 3A
4pin: 60V / 3A
5pin: 30V / 3A
6pin: 30V / 1.5A
8pin: 30V / 1.5A
- Withstanding voltage : 3,4pin: AC850V/1Min
5,6,8pin: AC650V/1Min
- Levels of protection: IP67
- Wire range : 3pin: 24~22AWG/0.25~0.34mm²
4pin: 24~22AWG/0.25~0.34mm²
5pin: 24~22AWG/0.25~0.34mm²
6pin: 26~24AWG/0.14~0.25mm²
8pin: 26~24AWG/0.14~0.25mm²
- Wire connection mode: soldering
- Operating temperature: -40°C~+105°C
- For Panel Thickness Range: 2.0~3.0mm
- RoHS Compliance
- Tolerance :
.X ±0.25mm
.XX ±0.1mm
Angles ±1°



Panel cut

SD-M8X-XXP-FF-SH7002-00A(H)

Coding: A,B

Pin number: 03,04,
05,06,08

| | | |
|---------------|-------------------|---|
| 8pin A Coding | A | B |
| 6pin A Coding | A | B |
| 5pin B Coding | A | |
| 4pin A Coding | A | |
| 3pin A Coding | A | |
| Description | General dimension | |

| 3pin A Coding | 4pin A Coding | 5pin B Coding | 6pin A Coding | 8pin A Coding |
|---------------------------|---------------------------|---------------------------|---------------------------|---------------------------|
| | | | | |
| Pin Assignment Front View | Pin Assignment Front View | Pin Assignment Front View | Pin Assignment Front View | Pin Assignment Front View |

| | | | | |
|------------------------|-----------------------------------|---|----------------------|-----------|
| DETACHED LISTS | PART NO.: SDM8XXXPFSSH700200AH | 宁波高松电子有限公司 NINGBO DEGSON ELECTRICAL CO., LTD | | |
| | APPD: | NAME: SD-M8X-XXP-FF-SH7002-00A(H) | | |
| | CHKD: | TITLE: CUSTOMER DRAWING | | |
| | DRFT: SQ 2019.05.17 | REV | D0-1 | |
| THIRD ANGLE PROJECTION | | DRAWING NO.: XXXXXXXX-XX-CXX | SHEET | 1/1 |
| | | MM (INCH) | DO NOT SCALE DRAWING | SCALE 1:1 |