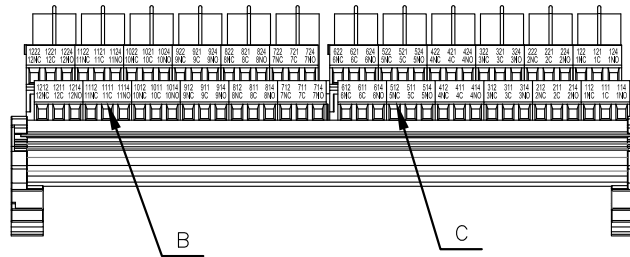
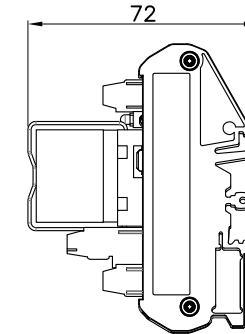
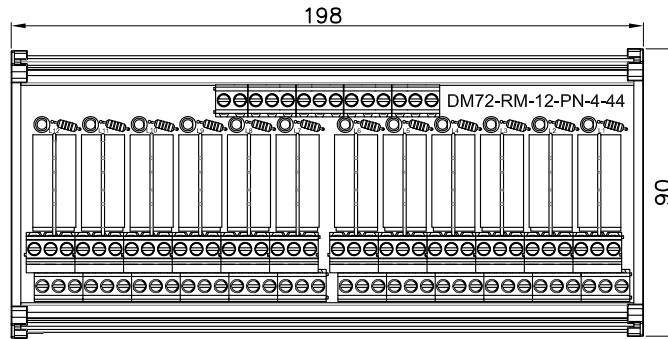
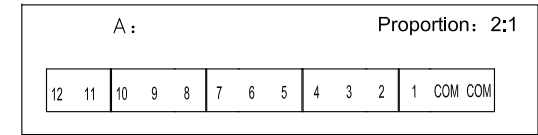
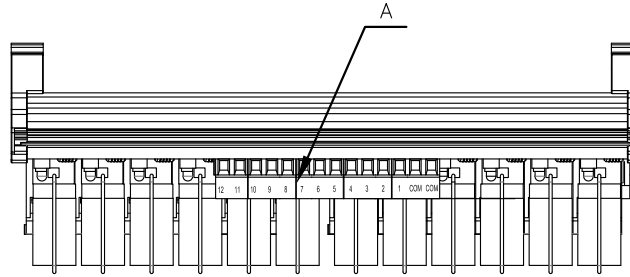


REVISION RECORD

REV	ECN	DESCRIPTION	DRFT	DATE
-----	-----	-------------	------	------



B: Proportion: 1.8:1

1222	1221	1224	1122	1121	1124	1022	1021	1024	922	921	924	822	821	824	722	721	724
12NC	12C	12NO	11NC	11C	11NO	10NC	10C	10NO	9NC	9C	9NO	8NC	8C	8NO	7NC	7C	7NO

1212	1211	1214	1112	1111	1114	1012	1011	1014	912	911	914	812	811	814	712	711	714
12NC	12C	12NO	11NC	11C	11NO	10NC	10C	10NO	9NC	9C	9NO	8NC	8C	8NO	7NC	7C	7NO

C: Proportion: 1.8:1

622	621	624	522	521	524	422	421	424	322	321	324	222	221	224	122	121	124
6NC	6C	6NO	5NC	5C	5NO	4NC	4C	4NO	3NC	3C	3NO	2NC	2C	2NO	1NC	1C	1NO

612	611	614	512	511	514	412	411	414	312	311	314	212	211	214	112	111	114
6NC	6C	6NO	5NC	5C	5NO	4NC	4C	4NO	3NC	3C	3NO	2NC	2C	2NO	1NC	1C	1NO

Specifications

Rated voltage	DC24V
Rated current	22mA
Output Voltage	250V/AC,30V/DC;
output current	5A
contact structure	2CO
Model	12
Signal input method	PNP+NPN
Mechanical life	AC $\geq 10^7$, DC $\geq 2 \times 10^7$;
Electrical life	$\geq 10^5$
Temperature range	- 25℃ ~ +55℃
Status Indicator	YES
Connector digits	/
Stripping Length	6-7mm
Terminal torque	0.4Nm (3.54Lb-In)
Input port/wire diameter	DG500-5.08/1.0-2.5mm ² /24-12AWG
Output port/wire diameter	DG500-5.08/1.0-2.5mm ² /24-12AWG
Installation Method	35mmDIN

DETACHED LISTS	PART NO.:	宁波高松电子有限公司 NINGBO DEGSON ELECTRICAL CO., LTD			
	APPD:	NAME: DM72-RM-12-PN-4-44-1XA(H)			
	CHKD:	TITLE: ASSEMBLY DRAWING			
	DRFT:	TITLE: ASSEMBLY DRAWING	REV		
THIRD ANGLE PROJECTION		DRAWING NO.:	DM72-RM-E09	SHEET	1/1
		DO NOT SCALE DRAWING	SCALE	1:1	