

Transfer or duplication of this document as well as the utilization or communication of its contents are prohibited unless explicit authorization is granted. Violations will be liable for compensation. All rights reserved for patent, utility model or designs registrations. 除非给予明确授权，否则禁止转让、复制、利用、交寄本文件的内容。侵犯者将承担赔偿责任。 本公司保留对涉及发明、实用新型和外观设计的所有权利。

FOR-1754 Rev.1.2

2

3

4

5

Dimensional tolerance(mm)					Length tolerance(mm)					<div>0.10/10 ±2°</div>
0	>30	>60	>100	>150	0	50	150	300	>1000	
±0.25	±0.35	±0.55	±0.80	±1.10	±6	±11	±16	±26	±36	

23.00

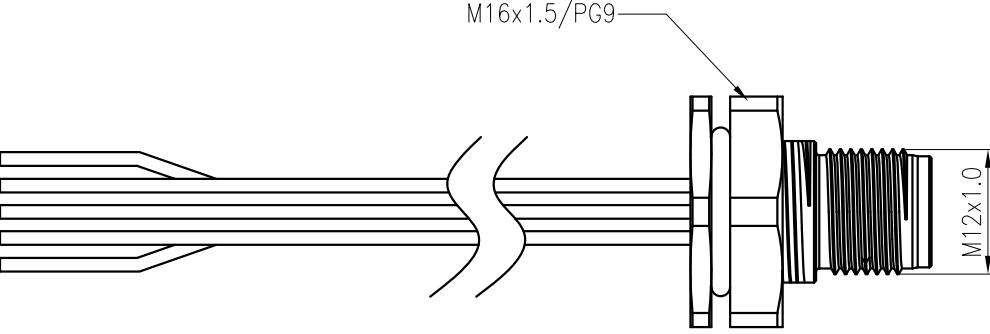
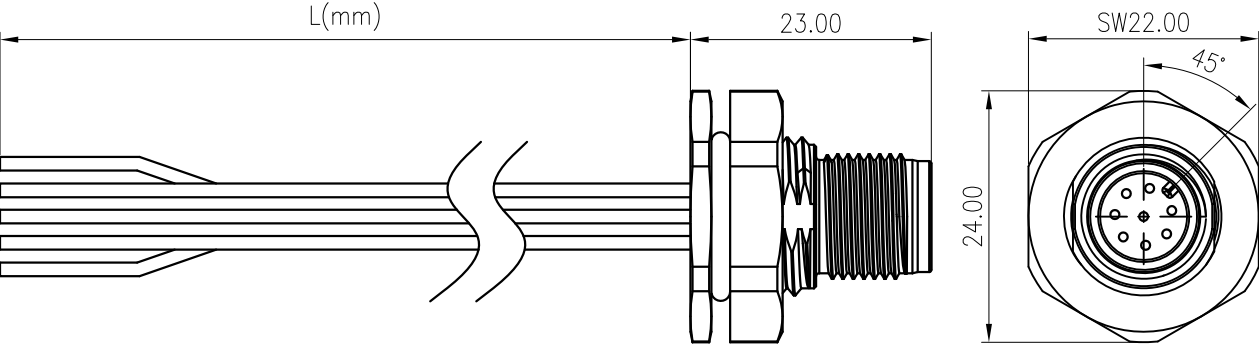
24.00

SW22.00

45°

额定电压/Rated Voltage	3/4PIN	5PIN	6/8/10/12PIN
	250V	60V	30V
额定电流/Rated Current	3/4/5PIN	6/8PIN	10/12PIN
	4A	2A	1.5A
耐电压/Withstanding voltage	3/4PIN	5PIN	6/8/10/12PIN
	AC1500V/1Min	AC1120V/1Min	AC500V/1Min
使用温度范围/Operating temperature(°C)	-25~+80		
防水等级/Levels of protection	IPX8		
接线方式/Terminal	soldering		
线缆标准/Wire specifications	3/4/5PIN	6/8PIN	10/12PIN
	UL1061 22AWG	UL1061 24AWG	UL1061 26AWG
锁板厚度/For Panel Thickness Max(mm)	3.0		
符合RoHS环保要求/Conform to RoHS	Yes		

6



SD-M12X-XXP-MM-SF8XXX-00A(H)

Coding:A,B,D

Pinnumber:03,04,05,06,08,10,12

Thread specification:

D:PG9;

E:M16*1.5

XX:150~1500mm

15:150±15mm

30:300±20mm

50:500±20mm

A0:1000±40mm

A5:1500±40mm

B0:2000±50mm

C0:3000±60mm

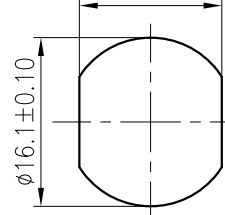
3pin A Coding	4pin A Coding	5pin A Coding
Pin Assignments Front View	Pin Assignments Front View	Pin Assignments Front View
		5 Grey
4 Black	4 Black	4 Black
3 Blue	3 Blue	3 Blue
	2 White	2 White
1 Brown	1 Brown	1 Brown
Pin Wire Color	Pin Wire Color	Pin Wire Color
Pin Out	Pin Out	Pin Out

MATERIAL:		SURFACE:	
MAT NO.:		<div>DEGSON®</div> 宁波高松电子有限公司 NINGBO DEGSON ELECTRICAL CO., LTD	
STATUS: /			
APPD:		NAME:	
CHKD:		SD-M12X-XXP-MM-SF8XXX-00A(H)	
DRFT: XU XY 2021.08.30		DRAWING NO.:	
SIZE: A4		TYPE: CUSTOMER DRAWING	
mm (inch)		SCALE: 1:1	
		REV 00	
		SHEET 1/2	

REV	ECN	DESCRIPTION	DRFT	DATE
-----	-----	-------------	------	------

Thread specification:

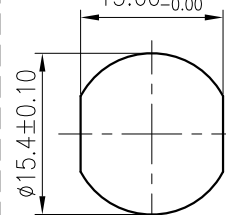
M16*1.5

 $13.60^{+0.10}_{-0.00}$ 

Panel Mounted

Thread specification:

PG9

 $13.60^{+0.10}_{-0.00}$ 

Panel Mounted

6pin A Coding		8pin A Coding		4pin D Coding		5pin B Coding		10pin A Coding		12pin A Coding	
Pin Assignments Front View		Pin Assignments Front View		Pin Assignments Front View		Pin Assignments Front View		Pin Assignments Front View		Pin Assignments Front View	
										12	Red/Blue
										11	Grey/Pink
										10	Violet
										9	Red
										8	Grey
7	Blue	8	Red					7	Black	7	Black
6	Pink	7	Blue					6	Yellow	6	Yellow
		5	Grey					5	Pink	5	Pink
		4	Yellow					4	Green	4	Green
		3	Green					3	White	3	White
2	Brown	2	Brown					2	Blue	2	Blue
1	White	1	White					1	Brown	1	Brown
Pin	Wire Color	Pin	Wire Color					Pin	Wire Color	Pin	Wire Color
Pin Out		Pin Out		Pin Out		Pin Out		Pin Out		Pin Out	

MATERIAL:

SURFACE:

MAT NO.:

STATUS: /

APPD:

CHKD:

DRFT: XU XY 2021.08.30

SIZE: A4

 $\frac{\text{mm}}{\text{(inch)}}$

NAME:

SD-M12X-XXP-MM-SF8XXX-00A(H)

DRAWING NO.: /

TYPE: CUSTOMER DRAWING

SCALE: 1:1

SHEET 2/2

REV

ECN

DESCRIPTION

DRFT

DATE

①

②

③

④

⑤

⑥

⑦

⑧

⑨

⑩

⑪

⑫

⑬

⑭

⑮

⑯

⑰

⑱

⑲

⑳

㉑

㉒

㉓

㉔

㉕

㉖

㉗

㉘

㉙

㉚

㉛

㉜

㉝

㉞

㉟

㊱

㊲

㊳

㊴

㊵

㊶

㊷

㊸

㊹

㊺

㊻

㊼

㊽

㊾

㊿

00

01

02

03

04

05

06

07

08

09

10

11

12

13

14

15

16

17

18

19

20

21

22

23

24

25

26

27

28

29

30

31

32

33

34

35

36

37

38

39

40

41

42

43

44

45

46

47

48

49

50

51

52

53

54

55

56

57

58

59

60

61

62

63

64

65

66

67

68

69

70

71

72

73

74

75

76

77

78

79

80

81

82

83

84

85

86

87

88

89

90

91

92

93

94

95

96

97

98

99

100

101

102

103

104

105

106

107

108

109

110

111

112

113

114

115

116

117

118

119

120

121

122

123

124

125

126

127

128

129

130

131

132

133

134

135

136

137

138

139

140

141

142

143

144

145

146

147

148

149

150

151

152

153

154

155

156

157

158

159

160

161

162

163

164

165

166

167

168

169

170

171

172

173

174

175

176

177

178

179

180

181

182

183

184

185

186

187

188

189

190

191

192

193

194

195

196

197

198

199

200

201

202

203

204

205

206

207

208

209

210

211

212

213

214

215