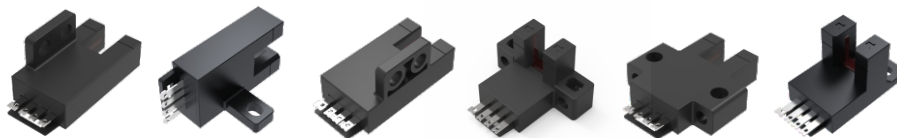


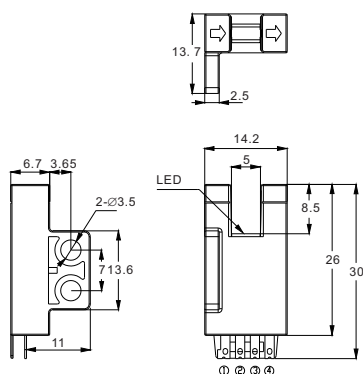
槽型  
Tank type


型号 Model							
NPN		DSF-302NA-SC	DST-303NA-SC	DSR-304NA-SC	DSL-305NA-SC	DSK-306NA-SC	DSY-307NA-SC
PNP		DSF-302PA-SC	DST-303PA-SC	DSR-304PA-SC	DSL-305PA-SC	DSK-306PA-SC	DSY-307PA-SC
基本特点 Basic Features							
工作原理 Working principle	光电传感器 Photoelectric Sensors						
外壳样式 Enclosure style	F型 Type F	T型 Type T	R型 Type R	L型 Type L	K型 Type K	Y型 Type Y	
光学工作原理 How optics work	对射 Shooting						
光源 Light source	红外LED, 940nm Infrared LED, 940nm						
槽宽 Slot width	5.0mm						
槽深 Groove depth	8.5mm				7.7mm	8.5mm	
检测物 Detection	1.2x1.8mm不透明物体				1.2x1.8mm opaque object		
指示灯 Light	红色LED Red LED						
电气数据 Electrical Data							
开关模式 Switch mode	Light.on（入光动作）/ D.on（遮光动作）可切换 Light.on (Light Action) / D.on (shading action) Switchable						
输出模式 Output mode	NPN或PNP集电极开路 NPN or PNP open collector						
响应时间 Response time	0.3ms						
开关频率 Switching frequency	3KHz						
重复精度 Repeatability	0.01mm						
迟滞（回差/应差） Hysteresis (Return/Response)	<0.2mm						
工作电压 Operating voltage	5~24V DC						
消耗电流 Current consumption	<20mA						
残余电压 Residual voltage	0.2V以下(负载电流10mA),1.5V以下(负载电流100mA) 0.2V or less (load current 10mA), 1.5V or less (load current 100mA)						
负载电流 Load current	≤100mA (24VDC)						
绝缘电阻 Insulation resistance	≥20MΩ (250VDC)						
耐压 Resistance	AC,1000V1分钟, 所有电源连接端子与外壳之间 AC, 1000V1 minutes, between all power connection between the terminal and the shell						
保护电路 Protection circuits	反极性保护/浪涌保护 Reverse polarity protection/surge protection						
环境条件 Environmental Conditions							
工作环境温度 Operating ambient temperature	-25~55℃						
储存温度 Storage temperature	-30~80℃（不结冰） -30~80℃ (non-icing)						
工作环境湿度 Humidity of the working environment	5~85%RH						
储存湿度 Store humidity	5~95%RH（无凝露） 5~95%RH (no condensation)						
环境照度 Ambient illumination	白炽灯≤1000 Lux Incandescent lamp ≤ 1000						
抗振性 Anti-vibration	10~55Hz, 1.5mm 振幅, X、Y、Z 三个方向各2h 10~55Hz sweep, 1.5mm amplitude, XYZ 3 directions for 2 hours each						
防护等级 Ingress protection	IP50						
机械数据 Mechanical Data							
连接方式 Connection	4 针连接器 4-pin connector						
尺寸（宽x高x深）Size	30x14.2x13.7mm	32.7x15.2x27.1mm	30x14.2x13.7mm	26x23.1x14.9mm	30x25.4x6.7mm	31.3x14.4x15.4mm	
材料 Material	PC						
重量 Weight	0.003kg	0.002kg	0.003kg	0.002kg	0.003kg	0.002kg	
配件 Fittings	/						

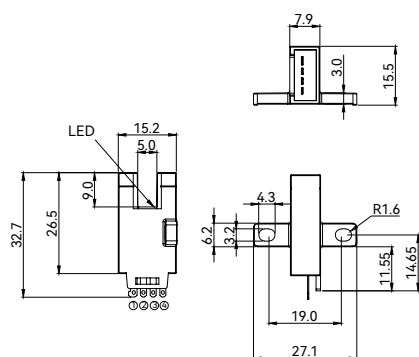
备注: DSL-305NA/PA-SE建议使用小头或非标M3(螺丝头直径小于5.2mm)螺丝安装; DSK-306NA/PA-SE建议使用一般通用M3.5螺丝安装; 其他型号建议使用一般通用M3螺丝安装。推荐扭力值小于0.6N。

Note: DSL-305NA/PA-SE is recommended to be installed with small-head or non-standard M3 (screw head diameter less than 5.2mm) screws; DSK-306NA/PA-SE is recommended to be installed with general-purpose M3.5 screws; Other models are recommended to be installed with general-purpose M3 screws. The recommended torque value is less than 0.6N.

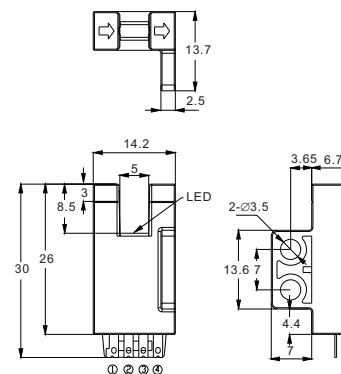
**F型 Type F**



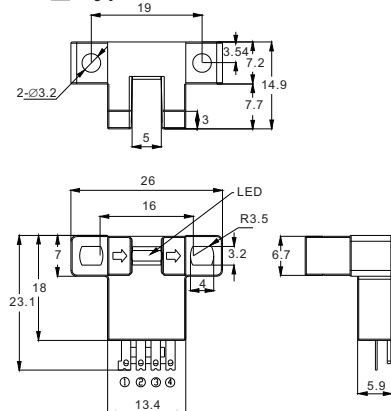
**T型 Type T**



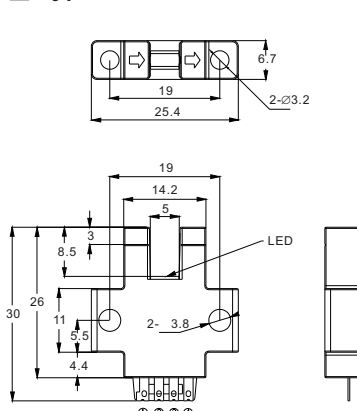
**R型 Type R**



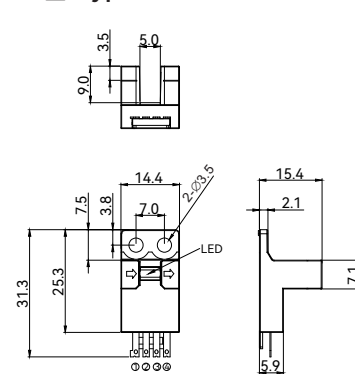
**L型 Type L**



### K型 Type K

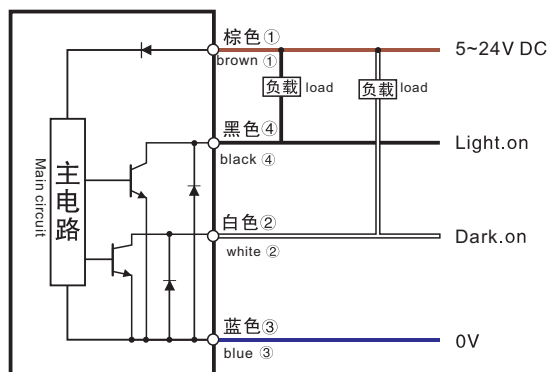


Y型 Type Y



### 接线示意图 Wiring Diagram

**NPN**



**PNP**

