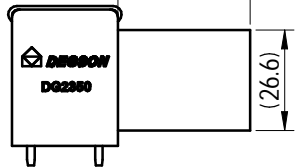
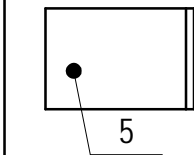


1:2

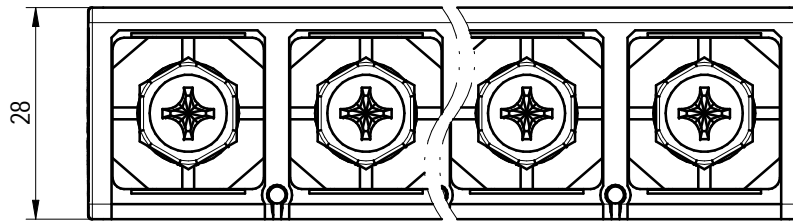
Without Cover

未注公差/General tolerances (mm)												0.1/10 ±2'		
0	>3	>6	>10	>18	>30	>50	>80	>120	>180	>250	>315		>400	>500
±0.12	±0.18	±0.22	±0.26	±0.31	±0.37	±0.57	±0.80	±0.93	±1.05	±1.15	±1.60	±2.20	±2.50	

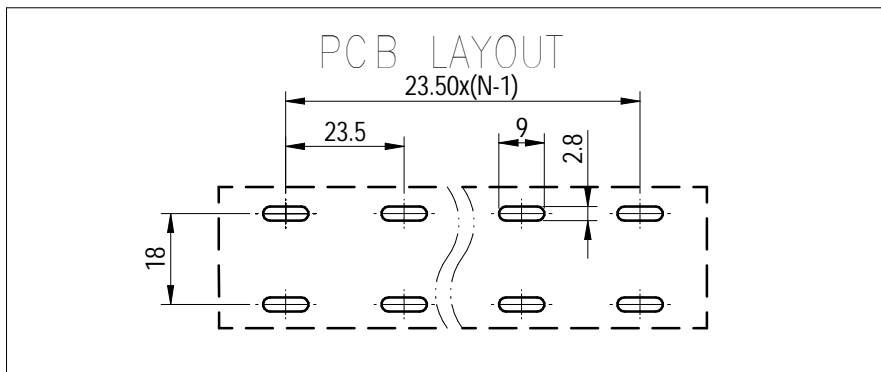
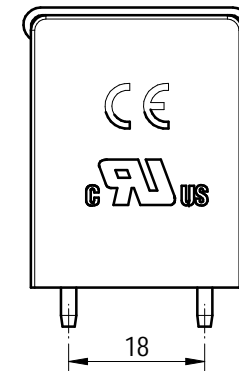
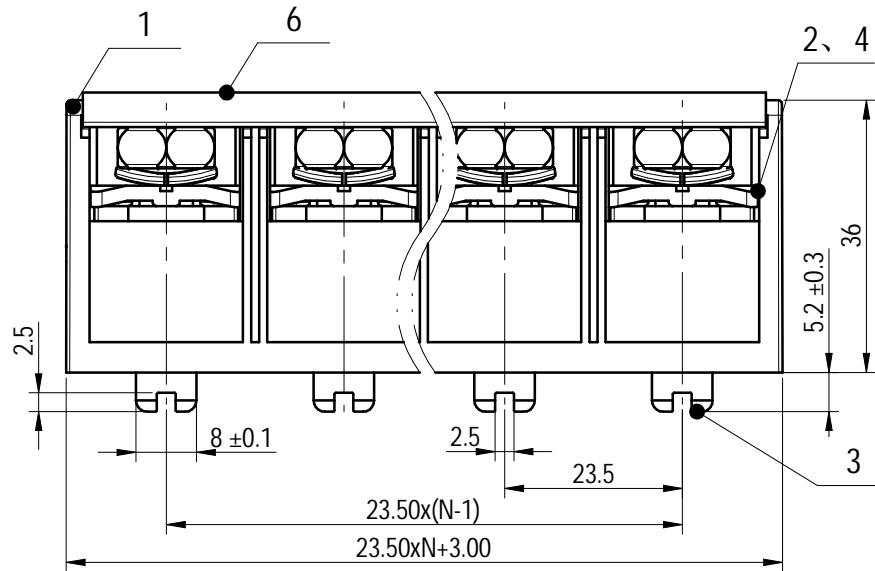
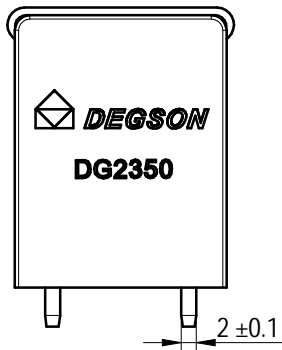


Clapboard packing for partition

Schematic diagram after assembly



UL 标准/UL Standard:		B	C	D
额定电压/电流/Rated Voltage(V)/Current(A)		600/120	600/120	600/5
IEC 标准/IEC Standard:				
额定电压/电流/Rated Voltage(V)/Current(A)		750/120		
额定脉冲电压(KV)/Rate Impulse Voltage(KV)		6		
螺丝扭矩/Torque Tightening(N·m/Lb.in)		M8, 5.5/48.80		
极限扭矩/Limit Torque Tightening(N·m)		≥15		
线径范围(硬线和软线)/Wire Range(rigid and flexible)(AWG/mm²)		35~50 / 2~1/0		
间距/Pitch(mm)/线数范围/Poles		23.5/N=02~06P		
使用温度范围/Operating temperature(°C)		-40~+120		
符合RoHS环保要求/Conform to RoHS		Yes		



Notes: The A&Z(H) in the name means:A(H) and Z(H)

ITEM	NAME OF PART	MATERIAL	NOTES
6	Cover	PC	UL94V-2
5	Clapboard	PVC	/
4	Screw	Steel	M8/Zn-Ni Plated
3	Pin_header	Copper alloy	Sn Plated
2	Nut	Steel	M8/Zn-Ni Plated
1	Housing	PBT	UL94V-0

DEGSON		MATERIAL: /	SURFACE/COLOR: /	
APPD: 蓝贵凡 2023.10.26		MAT NO./REV: / / 00		MAT STATUS: 批量
CHKD: 曹利彬 2023.10.26		NAME		
DRFT: 汪德荣 2023.10.26		DG2350-XXP-1Y-00A&Z(H)		
DRAWING NO.	TYPE	DRAWING STATUS	SCALE	SHEET
200065056	CUSTOMER DRAWING	已发布	2:1	1/1

REV	ECN	DESCRIPTION	DRFT	DATE
00	/	/	汪德荣	2023.10.26

Transfer or duplication of this document as well as the utilization or communication of its contents are prohibited unless authorized in advance. Violations will be treated as illegal activities and the violator will be held liable for compensation. All rights reserved for patent. 未经授权复制或传播本文件内容，或在本文件内容的基础上进行二次开发、修改、印刷、充注本文件的程序，均属于侵权行为，公司将依法追究。 除专利号明确标注外，其他专利号均隐含在本文件中。 除专利号明确标注外，其他专利号均隐含在本文件中。