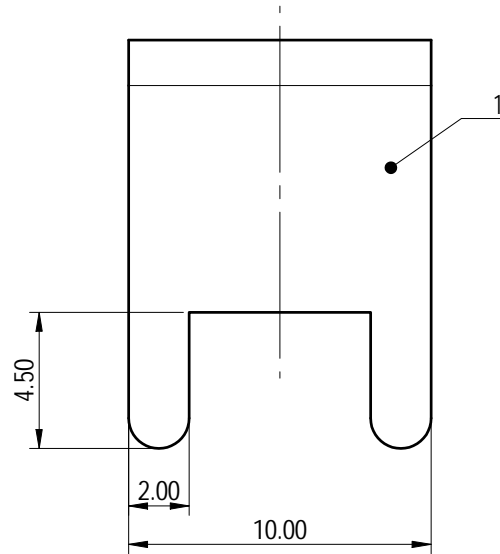
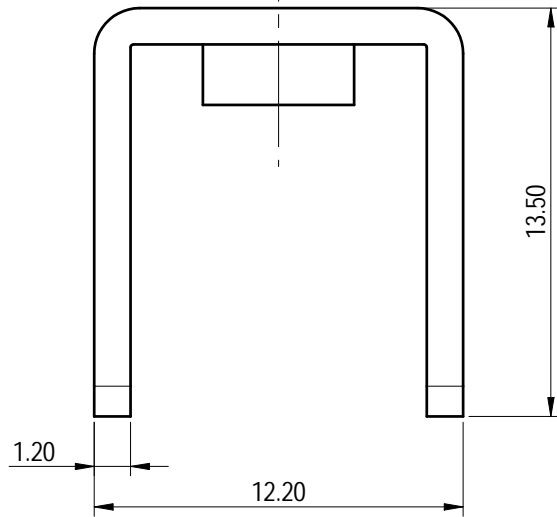
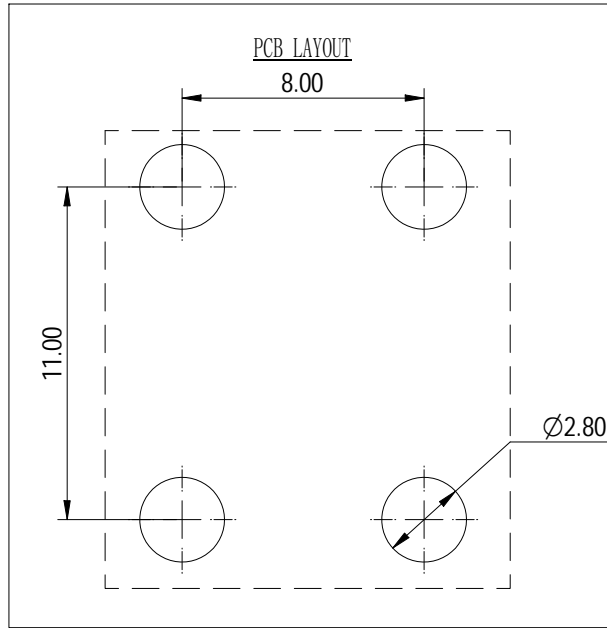
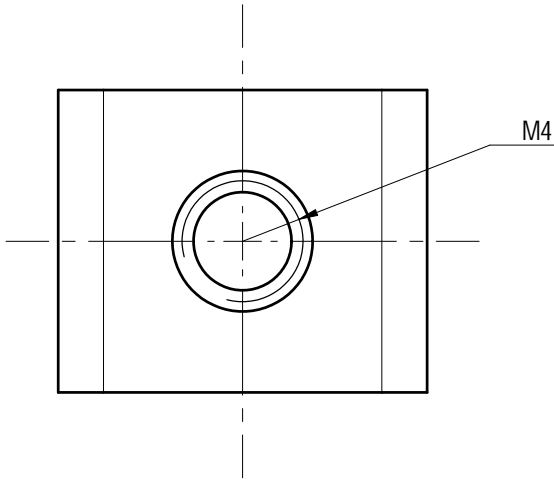


Transfer or duplication of this document as well as the utilization or communication of its contents are prohibited unless authorized in writing by the copyright owner. All rights reserved for patent, utility model or design registrations. 除专利、实用新型、外观设计、软件著作权等依法享有的权利外，其他权利均归作者所有。未经许可，不得复制或传播本文件内容。



未注公差/General tolerances (mm)													0.1/10
0	>3	>6	>10	>18	>30	>50	>80	>120	>180	>250	>315	>400	
±0.12	±0.18	±0.22	±0.26	±0.31	±0.37	±0.57	±0.80	±0.93	±1.05	±1.15	±1.60	±2.20	±2.50

Note: The A&Z (H) in the name means: A(H) and Z(H).

1	Pin header	Copper alloy	Sn Plated
ITEM	NAME OF PART	MATERIAL	NOTES
额定电流/Rated Current(A)			50A
螺丝扭矩/Torque Tightening(N·m/Lb.in)			M4, 1.2/10.53
符合RoHS环保要求/Conform to RoHS			Yes

		MATERIAL:	SURFACE/COLOR:	
APPD: 蓝贵凡 2023.06.26		MAT NO./REV: 10900000066-1 / 00		MAT STATUS: 批量
CHKD: 曹利彬 2023.06.26		NAME		
DRFT: 姜民洁 2023.06.26		K45-00A&Z(H)		
DRAWING NO.	TYPE	DRAWING STATUS	SCALE	SHEET
200199789	CUSTOMER DRAWING	已发布	4:1	1/1

REV	ECN	DESCRIPTION	DRFT	DATE
00				