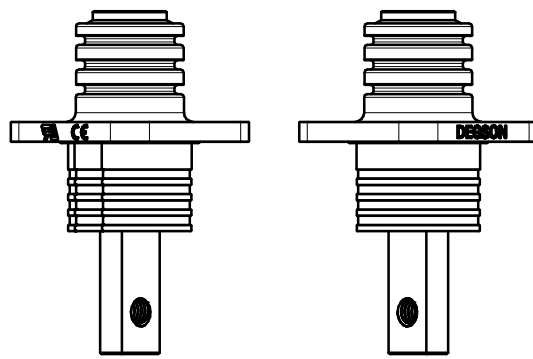
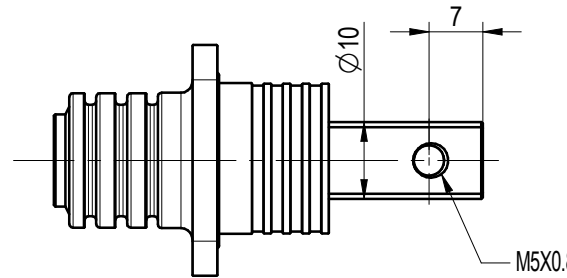
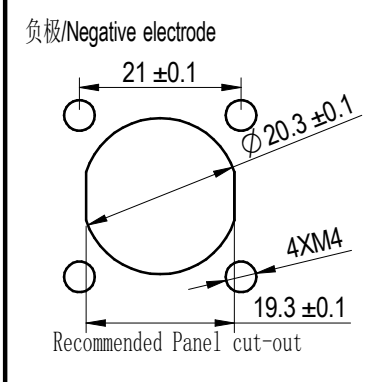
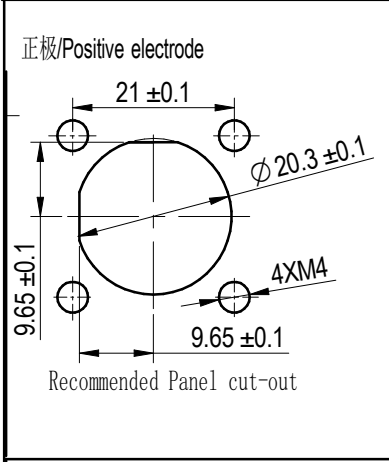
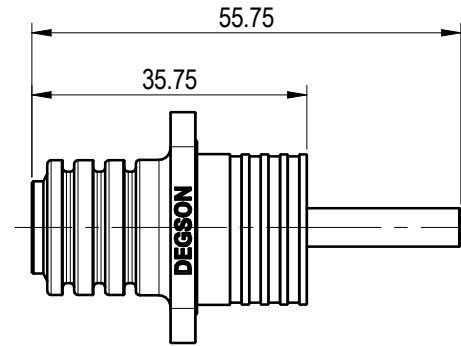
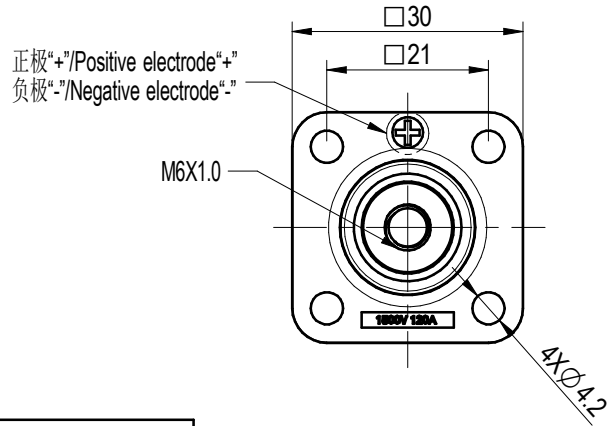


尺寸公差(mm)					0.05/10 ±1'
0 ~ 30	>30 ~ 60	>60 ~ 100	>100 ~ 150	>150	
±0.20	±0.30	±0.50	±0.70	±1.00	

技术要求/Technical requirements:	
颜色/Color	Black, Orange
锁紧方式/Locking method	螺钉(Copper Screw)
接线方式/Terminal	Copper Screw
外壳材料/Housing material	PA+GF
接触件材料/Connector material	铜合金(Copper alloy)
安装螺母紧固扭矩/Screw torque	M4/0.4~0.7N.m M5/2N.m M6/3N.m
额定电压/Rated voltage	1500V DC
额定电流/Rated current	120A
绝缘电阻/Insulate resistance	≥5000MΩ (drying)
耐电压/Withstanding voltage	6800V/min
接触电阻/Contact resistance	≤0.5mΩ
过电压等级/Overvoltage category	III
污染等级/Pollution degree	3
防护等级/Ingress protection	IP67 (Mated)
使用温度范围/Operating temperature(° C)	-40~+125(including temperature rise)
盐雾/Salt spray	48H
储存温度/Storage temperature(° C)	-40~+85
阻燃等级/Flame retardant ability	UL94-V0
符合RoHS环保要求/Conform to RoHS	Yes
满足户外使用/Satisfy outdoor use	Yes



EGD-120A-25-B/S-XX-10  
Color : BK : Black 负极  
OR : Orange 正极

		MATERIAL: 材质	SURFACE/COLOR: 表面处理		
		MAT NO./REV: 物料编码 / 版本	MAT STATUS: 物料状态		
APPD:		NAME			
CHKD:		EGD-120A-25-B/S-XX-10			
DRFT: 王子鹏	2024-07-12	DRAWING NO.	TYPE	DRAWING STATUS	SCALE
		200291791	图纸类型	图纸状态	1:1
					SHEET 1/1

00					
REV	ECN	DESCRIPTION	DRFT	DATE	

Transfer or duplication of this document as well as the utilization or communication of its contents without authorization is prohibited. All rights reserved for patent, utility model or design registrations. 未经授权复制或传播本文件内容，或在本文件内容基础上进行发明、实用新型或外观设计注册，均属于侵权行为。本公司保留追究法律责任。 未经授权复制或传播本文件内容，或在本文件内容基础上进行发明、实用新型或外观设计注册，均属于侵权行为。 All rights reserved for patent, utility model or design registrations.